



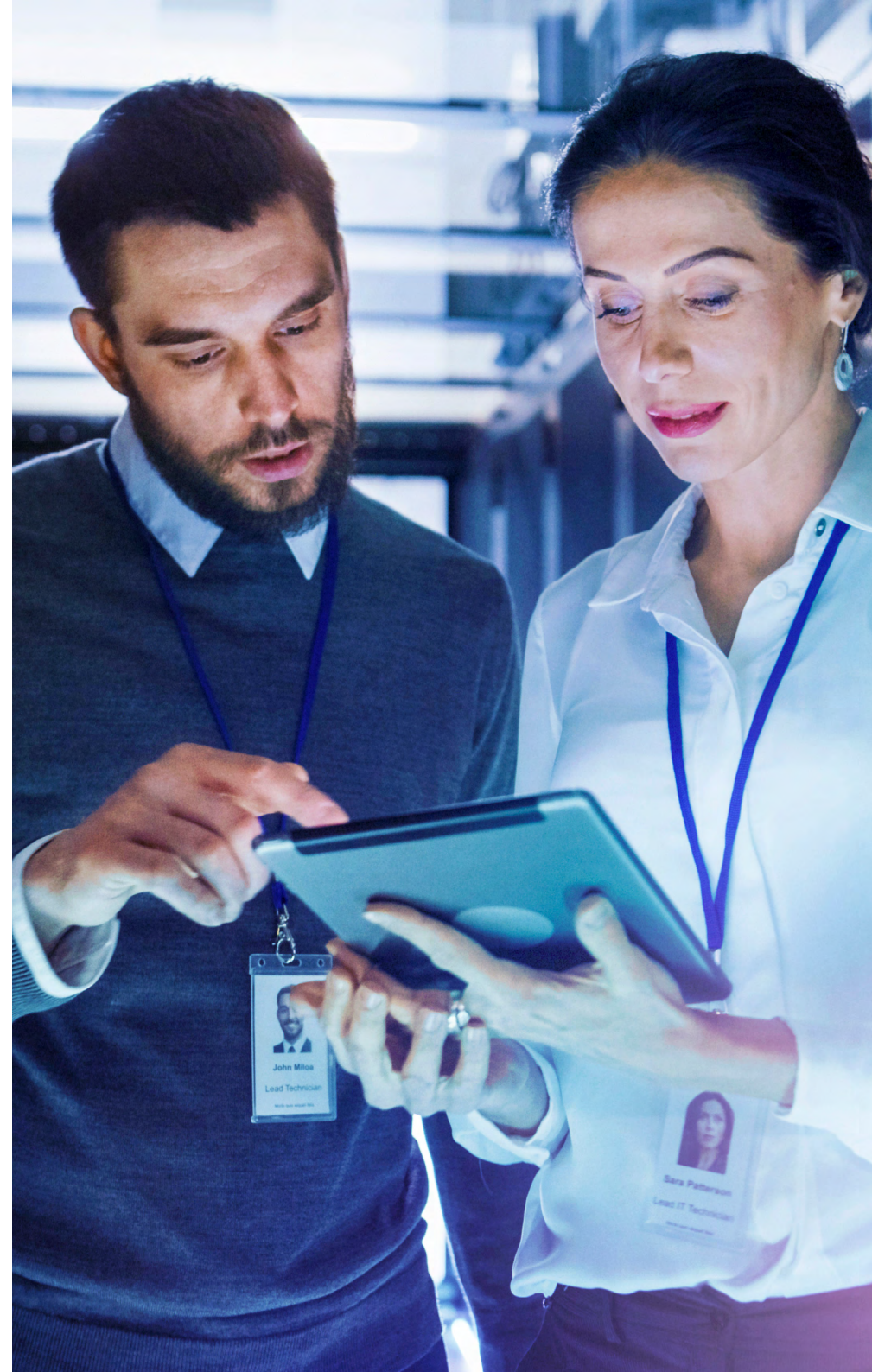
Get greater returns with 100Gbps Data Centre Connect

Deliver high bandwidths more efficiently

Our 100Gbps Data Centre Connect solution means you can deliver high bandwidths while benefiting from greater returns.

This popular option is known commonly in the market as an 'interconnect' or 'Network to Network Interface' (NNI).

Through our 100Gbps Etherway Data Centre Connect (DCC), you can take a single 100Gbps port, avoiding the need for multiple cross-connects and 10Gbps port cards on edge switches. That lets you use space and power more efficiently, making services cheaper and easier for you to manage.



Key details

- Etherway Data Centre Connect provides hand-off/ports via a BT switch collocated in a datacentre.
- 100Gbps DCC is available from 21 June 2022, from Telehouse North and Telehouse North Two. We're then rolling it out to more datacentre locations, including Global Switch 1, Equinix LD9 Powergate, Equinix LD8 (Harbour Exchange), Equinix MA1 Manchester Williams House, Equinix LD7 Slough, Equinix MA3 Manchester Joule House.
- 100Gbps DCC has an SLA of three working days (subject to capacity checks).
- Pricing is available in our Ethernet Pricing Tool and the latest version of our Ethernet Pricing API (version 6). Note that 100Gbps pricing is available only for locations where the capability has launched.





Offices Worldwide

The services described in this publication are subject to availability and may be modified from time to time. Services and equipment are provided subject to British Telecommunications plc's respective standard conditions of contract. Nothing in this publication forms any part of any contract.

© British Telecommunications plc 2023. Registered office: 1 Braham Street, London, E1 8EE. Registered in England No. 1800000.

January 2023