



# Wholesale Internet Connect

## Internet you can rely on

**When your customers want uncontended bandwidth that matches the speed of their business, you can give it to them with Wholesale Internet Connect. In fact, you can give them an internet connection that boasts super-fast speeds, can be flexibly controlled and help them work better.**

### The intelligent choice

As the internet is integral to everyday life, imagine how important it is for your customers' businesses. From promoting remote working to fast file transfer, they need fast connections that won't fail. Not only will you be able to meet these demands, you can:

- improve the customer experience with guaranteed, uncontended bandwidth that promotes productivity and promotes profitability
- reach to a wider customer base with our peering agreements that mean your customers can enjoy a faster internet connection
- and as the service doesn't work alone, it can be incorporated into a hybrid network environment, ensuring you are building your customer's network of the future.

It's market-leading

Wholesale Internet Connect is built on the UK's market-leading internet service\* and is backed up by a 100 per cent Service Level Agreement (SLA). Our SLA covers latency and delivery targets. If there's the chance we don't meet those targets then you'll get money back through service credits.

Easy to price and sell

Wholesale Internet Connect pricing is now more competitive than ever before so from the beginning you and your customers stand to benefit from impressive cost savings.

And when it comes to generating quotes, you can use our ethernet pricing tool. It means easy ordering and efficient management of pricing for your customers so you won't waste any time in getting them set up on the service.

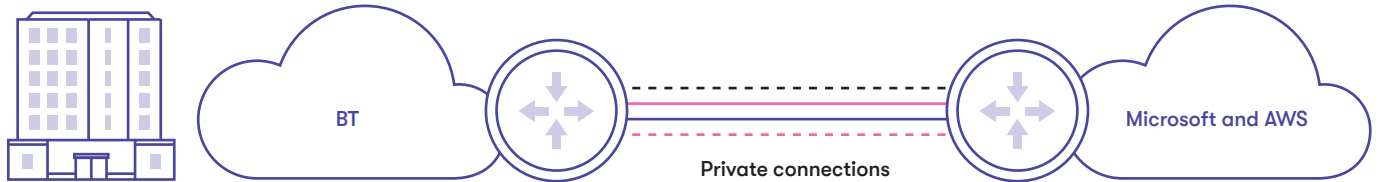
Peering so you stay connected

We use three different types of peering which allows the exchange of traffic from you to other networks:

- **Private** - direct private connectivity between our platform and cloud service providers
- **Public** - a shared port at an IXP allowing exchange of traffic from you to multiple peering partners
- **Transit** - used when traffic volumes don't justify peering - we use either third party transit or ourselves as a transit provider.

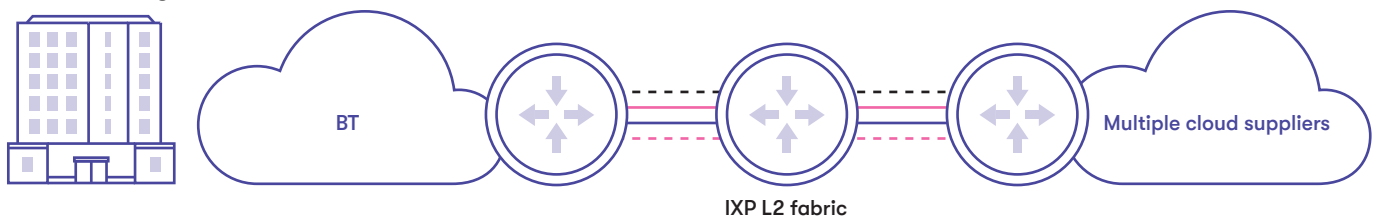
Want to see it in action? This is an example of how we provide connectivity to cloud suppliers.

Private Peering



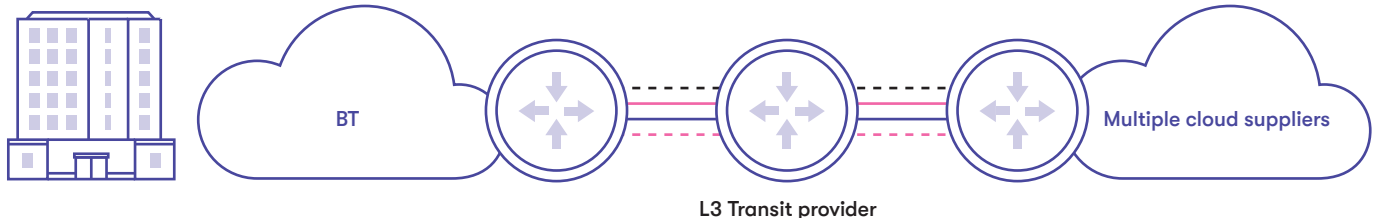
- Direct private connectivity between BT's internet platform and suppliers such as Microsoft and AWS.
- Currently used to connect to cloud partners across the globe.

Public Peering



- Used where traffic volumes don't justify dedicating 10G ports.
- Multiple peers connected over IXP L2 fabric.

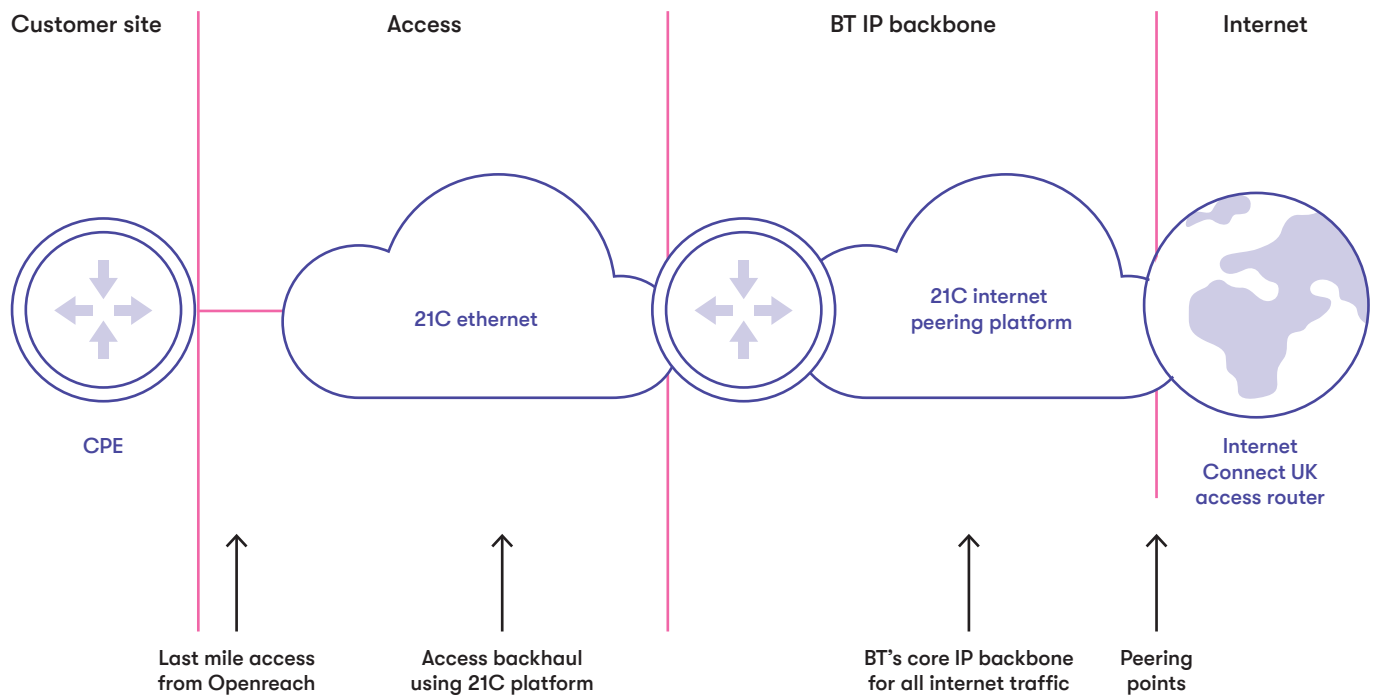
Public Peering



- Used where traffic volumes don't justify peering e.g. <1G.
- Connect via tier-1 transit providers.
- BT uses either 3rd party transit, or in some cases uses BT as a transit provider for connecting to services that are directly connected elsewhere.

\*UK's Number 1 leased line service, BTNet: as ranked by Netcraft since December 2009.

## Wholesale Internet Connect: a network overview



## Benefits

**Super-fast speeds.** Offer your customers the same upload and download speeds, from 30Mbps to an impressive 10Gbps. And as it's unlimited, it can be used as much as your customers want, with no caps, restrictions, traffic shaping or fair use policies.

**Complete control.** You can make sure your customers aren't wasting money with the inherent flexibility of Wholesale Internet Connect. Busy period? Just increase it. Slow time? Lower it. It's an easy way to manage bandwidth usage and save money along the way.

**We're wherever you are.** We offer the best geographic network coverage in the UK, all the way from Shetland down to the Isles of Scilly and everywhere in between. So wherever you or your customers are based, we'll get you set up.

**Fast delivery times.** The last thing you want after ordering a product is to wait for it to arrive. So our expert engineers will get your customers up and running in no time.

**Future possibilities.** With the best uncontended bandwidth in place, you'll be able to seamlessly shift your customers over to hosted services.

**Extra security and hardware options.** Need routers to complete the package? As our product is flexible you can have it with or without hardware, giving you the option to buy routers from us or provide your own equipment to support your customers' needs. The product supports all routers. And we also offer extra security services, such as DDoS protection. Ask your account manager for more information.

Find out more at:

[www.btwholesale.com/products-and-services/  
data/wholesale-internet-connect.html](http://www.btwholesale.com/products-and-services/data/wholesale-internet-connect.html)

Get in touch by emailing

[clientreception@bt.com](mailto:clientreception@bt.com)

or call us on **0800 671 045**

Issued: November 2019

**Offices worldwide**

The services described in this publication are subject to availability and may be modified from time to time. Services and equipment are provided subject to British Telecommunications plc's respective standard conditions of contract. Nothing in this publication forms any part of any contract.

© British Telecommunications plc 2019  
Registered office: 81 Newgate Street, London EC1A 7AJ.  
Registered in England No: 1800000.

