

# Wholesale Hosted Centrex Call Analytics module iCS Report Premier using **icall suite**



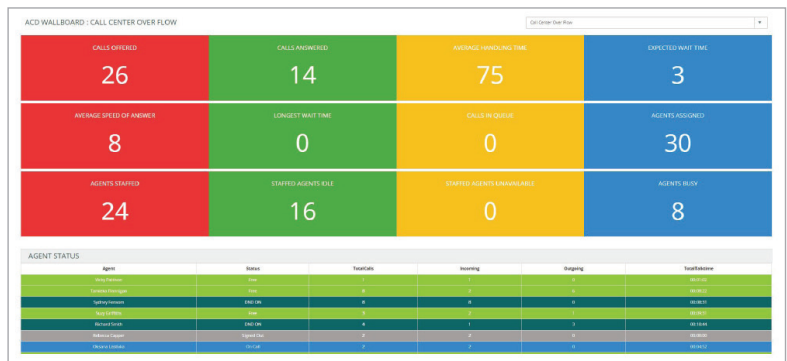
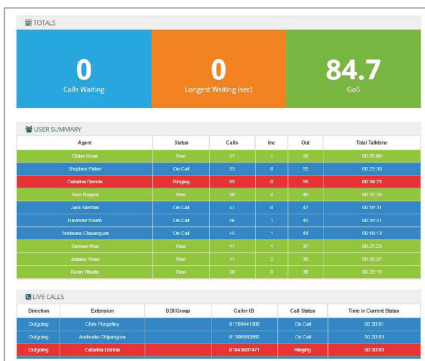
Wholesale Hosted Centrex Call Analytics module iCS Report Premier enhances Wholesale Hosted Centrex Call Analytics module iCS Report by adding live call statistics. Monitor queues and manage customer-facing teams via live dashboards, reports and wallboards.

## Monitor up-to-the-minute analytics to meet SLAs and commitment targets

- Live call reporting. Monitor hunt groups, call queues and incoming calls on users as well as reporting on critical metrics such as Grade of Service (GoS), Percentage Calls Answered (PCA), abandoned calls, longest waiting time and unreturned missed calls.
- Essential team statistics at a glance via dashboards and wallboards. Display performance call queue parameters on group wallboards in real-time.
- Monitor call handling presence. View the live status of call handlers and monitor analytics by call handler.
- Staff resourcing to review performance and use “what if” calculations to forward plan staff shifts.
- Call recording options available.



Maximise staff and resource productivity, minimise costs, avoid missed opportunities from dropped calls and deliver the highest levels of customer service.



Wholesale Hosted Centrex Call Analytics module iCS Report Premier is an intuitive mobile-optimised application delivering powerful call analytics via live dashboards and wallboards.

### Live call reporting

Run reports on live calls waiting and view call handling statistics by hunt group, call queue and DDI. Pre-configured reports include:

- Availability and punctuality
- Total time available for all extensions within the business
- Time on Do Not Disturb (DND)
- Grade of Service (GoS) and Percentage Calls Answered (PCA)
- Call queues, waiting time and abandoned calls
- Unreturned missed calls

Extensive filter options are available on every report as well as the option to schedule as a regular report, export as PDF/CSV and email to any email address.

### Hunt group wallboard

The hunt group wallboard allows performance call queue parameters to be monitored continually in real-time.

Key metrics are displayed on live tiles ready to share on a desktop or large screen. This is an essential tool for any business handling inbound calls.

### Call centre wallboard

View queue and call statistics for call centres. The call centre wallboard displays 12 live tiles of key performance metrics including calls offered/in queue, agents staffed/assigned / busy and staffed agents idle/unavailable.

Agent workflow analytics provide summary and detailed information on availability status and punctuality.

### Group view wallboard

Group view enables supervisors to see the status of their agents (available/unavailable/on DND). This provides a clear view of how many staff are available to take calls at any given time.

### Agent reporting

Live analytics provide information by agent:

- Number/duration of inbound/outbound calls
- Available time and time on DND/break
- Time logged in

### Live calls

Display the current calls in progress within the business. View call direction (outgoing or incoming), extension name, DDI, current call status (ringing or on call) and time in current status.

### Call centre queue statistics

View metrics on call centre queues including average queue time, wait time and call duration.

Analyse call handling including missed/declined calls and average call duration.

### Staff and agent modelling

Review past performance and use “what if” calculations to forward plan the number of staff and times of day you want them to work.

Model and predict using different staffing levels or different volumes of calls, to ensure optimum resource. Parameters such as wrap-up time can be altered to achieve SLAs.

### My console

In addition to My Console providing access to their own analytics, agents are able to view their own personal wallboard and call history.

# BT wholesale



The information in this publication was correct at time of going to print. We may make minor alterations to the specifications of products which do not affect their performance, and may vary prices and delivery charges.

The telecommunications services described in this publication are subject to availability and may be modified from time to time. Services and equipment are provided subject to British Telecommunications plc's respective standard conditions of contract. Nothing in this publication forms part of any contract.

© British Telecommunications plc 2016.  
Registered office: 81 Newgate Street, London,  
England EC1A 7AJ.

Issue: 1\_1116

Email [clientreception@bt.com](mailto:clientreception@bt.com) or call

# 0800 671 045

[www.btwholesale.com](http://www.btwholesale.com)